

Sezione II  
Elenco delle parti  
raggruppate in complessivi

AA.1F-F104S-4

Figura e particolare	NDR	DENOMINAZIONE							Quant.	Codice applicab.
		1	2	3	4	5	6	7		
		WINDSHIELD								
202	772082-105	.	.	.	.	.	.	.	1	6701-6763
	772082-133	.	.	.	.	.	.	.	1	6764-6792
	772082-137	.	.	.	.	.	.	.	1	6793-
- 1	772082-107	A.	.	.	.	.	.	.	1	6701-6763
	772082-135	B.	.	.	.	.	.	.	1	6764-6792
	772082-139	B.	.	.	.	.	.	.	1	6793-
		Attaching Parts								
- 2	AN4-7A	.	.	.	.	.	.	.	5	
- 3	NAS1104-10	.	.	.	.	.	.	.	12	
- 4	AN4-10A	.	.	.	.	.	.	.	2	
- 5	6800-048	.	.	.	.	.	.	.	12	
	AN960D416	.	.	.	.	.	.	.	19	
	MS21042L4	.	.	.	.	.	.	.	19	
		*								
- 6	771488-503	.	.	.	.	.	.	.	1	
- 7	LS3859R8-19	.	.	.	.	.	.	.	1	
	784043-1	.	.	.	.	.	.	.	1	
		Attaching Parts								
- 8	NAS517-3-2	.	.	.	.	.	.	.	19	
- 9	NAS517-3-3	.	.	.	.	.	.	.	6	
		*								
-10	784042-1	.	.	.	.	.	.	.	1	
-11	761250	.	.	.	.	.	.	.	1	
-12	784044-1	.	.	.	.	.	.	.	1	
	773470-23	A.	.	.	.	.	.	.	1	6701-6763
	851615-101	B.	.	.	.	.	.	.	1	
-13	773470-21	A.	.	.	.	.	.	.	1	6701-6763
	851615-105	B.	.	.	.	.	.	.	1	
-14	760669R	A.	.	.	.	.	.	.	1	6701-6763
	851614-101	B.	.	.	.	.	.	.	1	
-15	760207-8L	.	.	.	.	.	.	.	1	
-16	760207-8R	.	.	.	.	.	.	.	1	
		Attaching Parts								
-17	NAS517-3-2	.	.	.	.	.	.	.	6	
-18	NAS517-3-4	.	.	.	.	.	.	.	3	
-19	NAS517-3-3	.	.	.	.	.	.	.	15	
-20	NAS517-3-10	.	.	.	.	.	.	.	1	
-21	NAS517-3-14	.	.	.	.	.	.	.	2	
-22	NAS517-3-20	.	.	.	.	.	.	.	2	
-23	NAS517-3-12	.	.	.	.	.	.	.	4	
-24	NAS517-3-5	.	.	.	.	.	.	.	AR	
-25	AN960D10	.	.	.	.	.	.	.	AR	
-26	AN960D10	.	.	.	.	.	.	.	8	
-27	MS21042L3	.	.	.	.	.	.	.	AR	
-28	MS21042L3	.	.	.	.	.	.	.	2	
-29	MS21042L3	.	.	.	.	.	.	.	2	
-30	52-1650-02	.	.	.	.	.	.	.	AR	
		*								
-31	847349-101	.	.	.	.	.	.	.	1	
-32	784120-1	.	.	.	.	.	.	.	1	
-33	761252	.	.	.	.	.	.	.	1	
-34	760207-19	.	.	.	.	.	.	.	1	
-35	760207-20	.	.	.	.	.	.	.	1	
-36	760207-17	.	.	.	.	.	.	.	1	
-37	760944	.	.	.	.	.	.	.	1	
-38	760207-11	.	.	.	.	.	.	.	1	
-39	761468-3	.	.	.	.	.	.	.	AR	
-40	761468-4	.	.	.	.	.	.	.	AR	
-41	761468-5	.	.	.	.	.	.	.	AR	

AA.1F-F104S-4

Windshield and Canopy

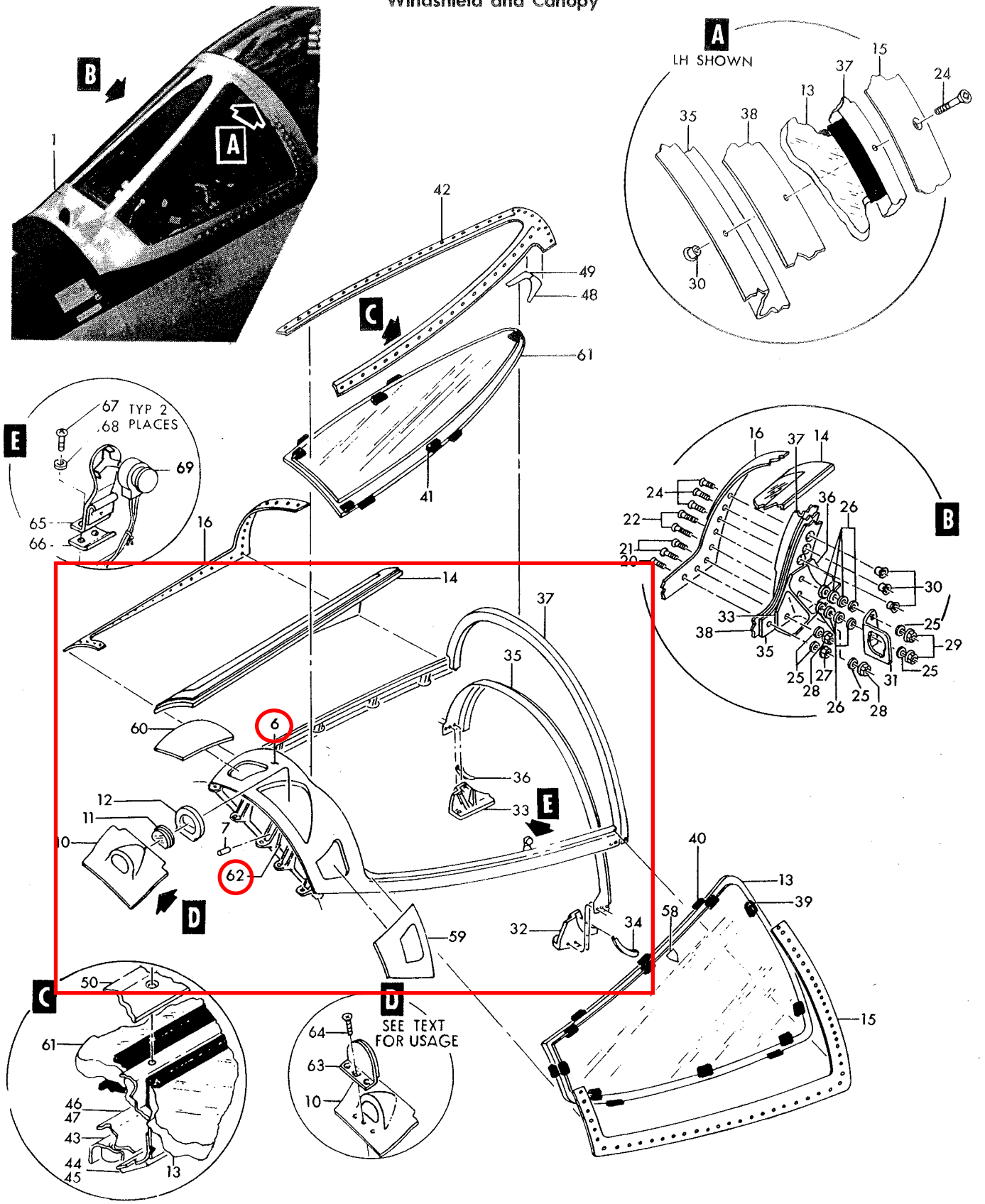


Figure 202—Windshield (Sheet 1 of 2)

AA.1F-F104S-4

Figura e particolare	NDR	1	2	3	4	5	6	7	DENOMINAZIONE	Quant.	Codice applicab.
202-42	772082-5	.	.	.	.	.	.	.	FRAME ASSY, windshield center	1	
-43	NAS689P12-19	.	.	.	.	.	.	.	CHANNEL NUT (80205)	2	
-44	773139-1	.	.	.	.	.	.	.	BEAM, center frame LH	1	
-45	773139-2	.	.	.	.	.	.	.	BEAM, center frame RH	1	
-46	772082-7	.	.	.	.	.	.	.	RETAINER, center frame LH	1	
-47	772082-8	.	.	.	.	.	.	.	RETAINER, center frame RH	1	
-48	761443L	.	.	.	.	.	.	.	FILLER, windshield	1	
-49	761443R	.	.	.	.	.	.	.	FILLER, windshield	1	
-50	760207-7	.	.	.	.	.	.	.	RETAINER, windshield center	1	
									Attaching Parts		
-51	NAS517-3-3	.	.	.	.	.	.	.	SCREW (80205)	2	
-52	NAS517-3-11	.	.	.	.	.	.	.	SCREW (80205)	2	
-53	NAS517-3-12	.	.	.	.	.	.	.	SCREW (80205)	40	
-54	NAS517-3-5	.	.	.	.	.	.	.	SCREW (80205)	8	
-55	AN960D10	.	.	.	.	.	.	.	WASHER (88044)	4	
-56	52-1650-02	.	.	.	.	.	.	.	NUT, flush (72962)	8	
-57	MS21042L3	.	.	.	.	.	.	.	NUT (96906)	4	
									*		
	773161-1	.	.	.	.	.	.	.	BRACKET, radar lock on indicator light (see fig. 227)	1	
-58	773161-2	.	.	.	.	.	.	.	BRACKET, radar lock on indicator light (see fig. 227)	1	
-59	763930	.	.	.	.	.	.	.	RAIN REMOVER ASSY, fus sta 184 to 189 LH side (see fig. 149)	1	
									Attaching Parts		
	NAS517-3-2	.	.	.	.	.	.	.	SCREW (80205)	10	
	AN960D10	.	.	.	.	.	.	.	WASHER (88044)	10	
	MS21042L3	.	.	.	.	.	.	.	NUT (96906)	10	
									*		
-60	760207-9R	.	.	.	.	.	.	.	SKIN, windshield (fus sta 184 to 189 RH side)	1	
									Attaching Parts		
	NAS517-3-2	.	.	.	.	.	.	.	SCREW (80205)	26	
	AN960D10	.	.	.	.	.	.	.	WASHER (88044)	26	
	MS21042L3	.	.	.	.	.	.	.	NUT (96906)	26	
									*		
-61	760668	A.	.	.	.	.	.	.	PANEL, windshield center	1	6701-6792
	851613-101	B.	.	.	.	.	.	.	PANEL, windshield center	1	
	784131-1	.	.	.	.	.	.	.	GUSSET, windshield LH	1	
	784132-1	.	.	.	.	.	.	.	BLOCK, windshield LH	1	
-62	764579	.	.	.	.	.	.	.	NAMEPLATE, aircraft modification	1	
	784265-9	.	.	.	.	.	.	.	PLUMBING INSTL, windshield frame (see fig. 134)	1	
	790986-1	.	.	.	.	.	.	.	BRACKET ASSY, dust cover support (see fig. 219)	2	
	779208-503	.	.	.	.	.	.	.	ELECTRICAL INSTL, radar lock on indicator light (see fig. 227)	1	6701-6763
	779208-107	.	.	.	.	.	.	.	ELECTRICAL INSTL, radar lock on indicator light (see fig. 227)	1	6764-
	779208-504	.	.	.	.	.	.	.	ELECTRICAL INSTL, radar lock on indicator light (see fig. 227)	1	6701-6763
	779208-108	.	.	.	.	.	.	.	ELECTRICAL INSTL, radar lock on indicator light (see fig. 227)	1	6764-
	B6630C10	.	.	.	.	.	.	.	LIGHT FIXTURE, (DS76) Instrument (72914) (Lockheed spec dwg 629267-3) (see fig. 220)	1	
									Attaching Parts		
	AN507B632R12	.	.	.	.	.	.	.	SCREW (88044) (see fig. 220)	1	6701-6815
	MS24693BB30	.	.	.	.	.	.	.	SCREW (96906) (see fig. 220)	1	6816-
	LS9030-327	.	.	.	.	.	.	.	LAMP, incandescent (blue-white) (36659)	1	
	784706-3	.	.	.	.	.	.	.	DUCT INSTL, windshield defogging (see fig. 141)	1	
	FL0693-101	C.	.	.	.	.	.	.	GUARD INSTL, I.R.S. window (A0019) (see fig. 260 for reqd)	REF	
-63	FL0692-101	C.	.	.	.	.	.	.	GUARD, I.R.S. window (A0019)	1	
-64	NAS517-3-3	C.	.	.	.	.	.	.	SCREW (80205)	3	
	FL1011-000	.	.	.	.	.	.	.	BRACKET INSTL, LH cockpit thermal switch (see fig. 159 for reqd)	REF	
-65	FL1010-000	.	.	.	.	.	.	.	BRACKET ASSY, LH cockpit thermal switch	1	
-66	FL1009-000	.	.	.	.	.	.	.	PLATE, LH cockpit thermal switch	1	
-67	AN515-6R4	.	.	.	.	.	.	.	SCREW (88044)	2	
-68	AN960-6	.	.	.	.	.	.	.	WASHER (88044)	2	
-69	G32-IL	.	.	.	.	.	.	.	THERMOSTAT, (S67) windshield thermal switch (97896) (Lockheed spec dwg 613662-1) (see fig. 159 for reqd)	REF	

A - Removed per AA.1F-104S-OT-113B  
 B - Reqd per AA.1F-104S-OT-113B  
 C - Reqd per AA.1F-104-OT-715A